

A Beginner's Guide to Glass Painting

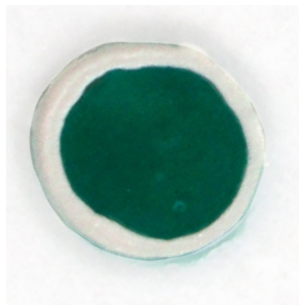


Colors For Earth glass paints open up a world of decorating options in glass. Learn the basics here!

How to Mix Your Paint

Glass Color • BubbleArt Sparkle Colors

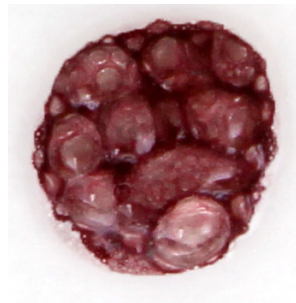
1. Scoop powdered glass color into a paint pot.
2. Mix in a small amount of Glass Medium until you achieve a heavy cream consistency.
3. You're ready to paint! Use a paintbrush to drop the color onto the glass, and fill the desired area.



Glass Colors

30 opaque colors • Food safe
Fires glossy at 1380 °F

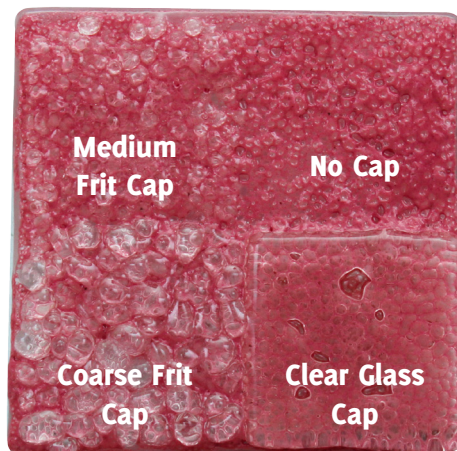
Apply using a brush, sponge, writer bottle and more. Colors can be mixed and blended to achieve the desired effect.



BubbleART Colors

16 translucent colors
Food safe when capped
Fire to at least 1380°F

Create the look and feel of glass bubbles. Intensify the effect by covering the bubble paint with a layer of Carolina Frit.



Sparkle Glass Colors

4 translucent colors
Food safe when capped
Fire to at least 1380°F

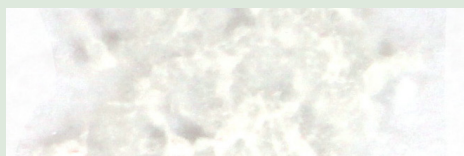
Add shimmer to your project with a layer of Sparkle Colors. Can be mixed with any glass color to add shimmer.



Outline Colors

2 matte colors • Food safe
Fire to at least 1380°F

Paint or pipe outline colors to achieve smooth line work on your projects. Create a dam to pool glass colors, or add accents on top. Ready to paint, no mixing necessary. For a glossy finish, cap with clear glass.



Piping Paste

Create a dimensional, raised outline. Great for creating patterns for children to paint inside.

Specialty Products

Detailing Black

Paint on top of dried glass color for fine detail that fires glossy without a clear cap.



Relief Motif

Add dimension to your painting. Perfect for creating snowy texture, etc. Can be tinted with glass colors.